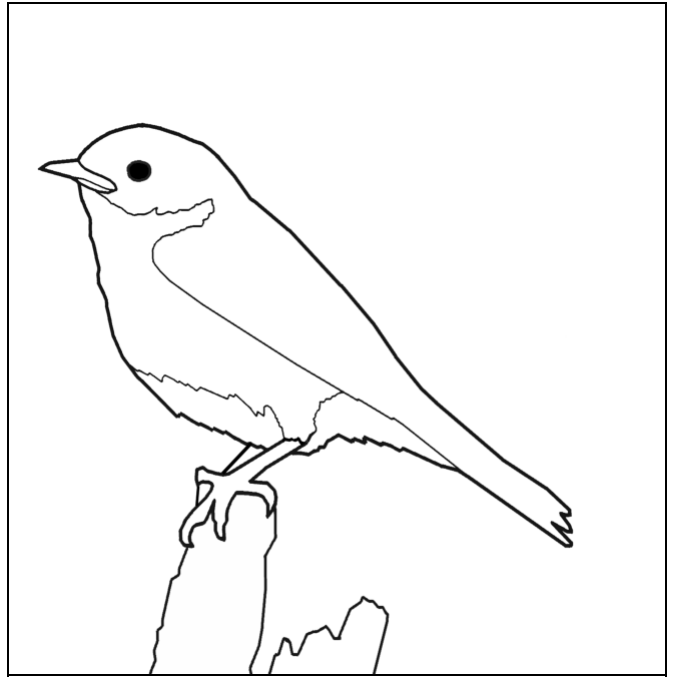
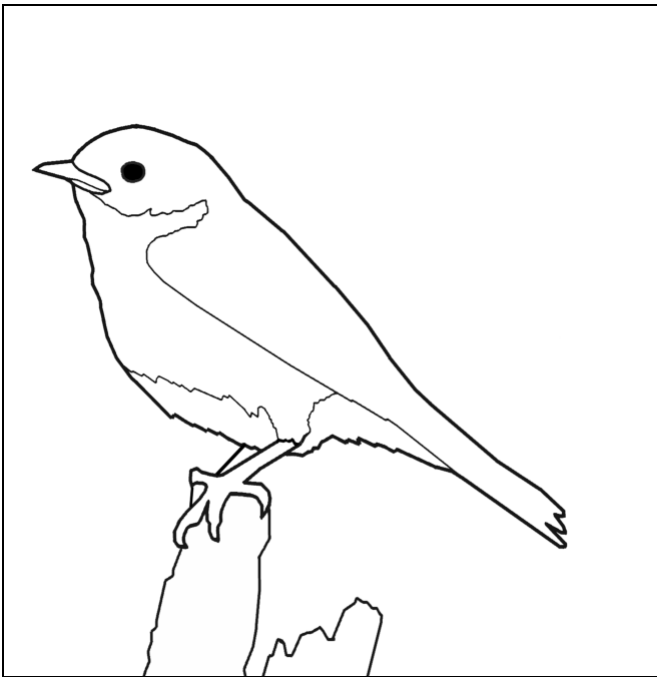


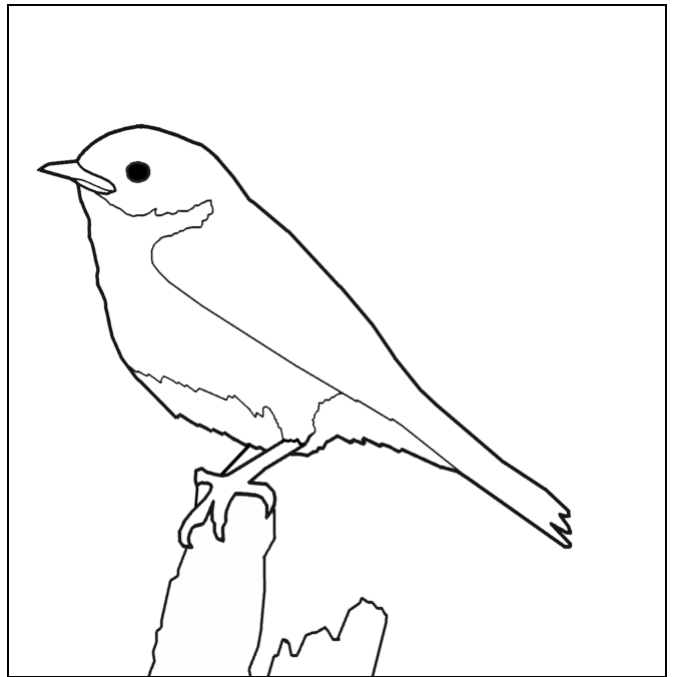
Name: Bluebird
Habitat: Grassland Edges
When to see them: Mostly Spring, Summer, Fall
What they eat: Insects, Berries, Seeds
Their home: Trees and bird boxes



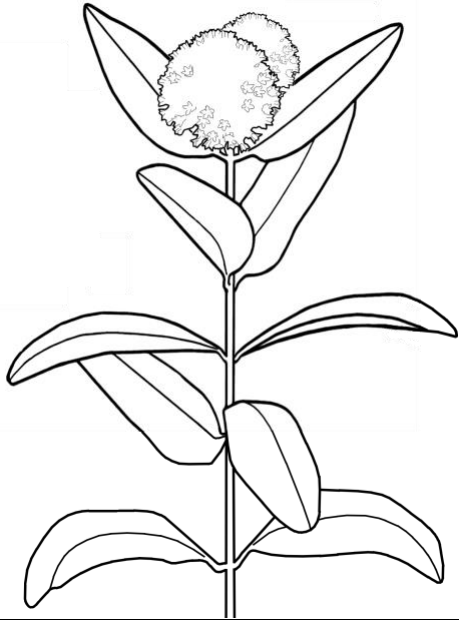
Name: Bluebird
Habitat: Grassland Edges
When to see them: Mostly Spring, Summer, Fall
What they eat: Insects, Berries, Seeds
Their home: Trees and bird boxes



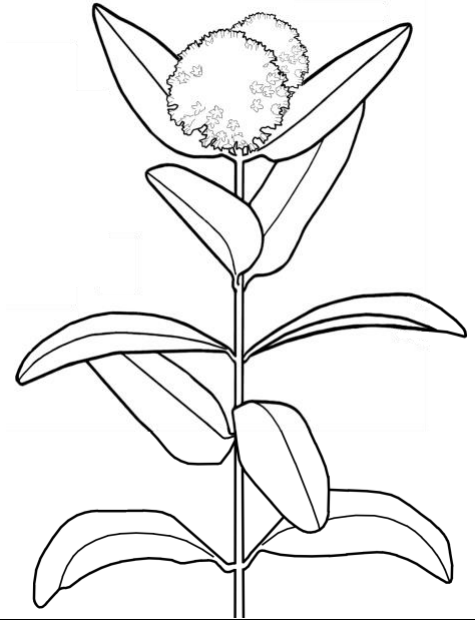
Name: Bluebird
Habitat: Grassland Edges
When to see them: Mostly Spring, Summer, Fall
What they eat: Insects, Berries, Seeds
Their home: Trees and bird boxes



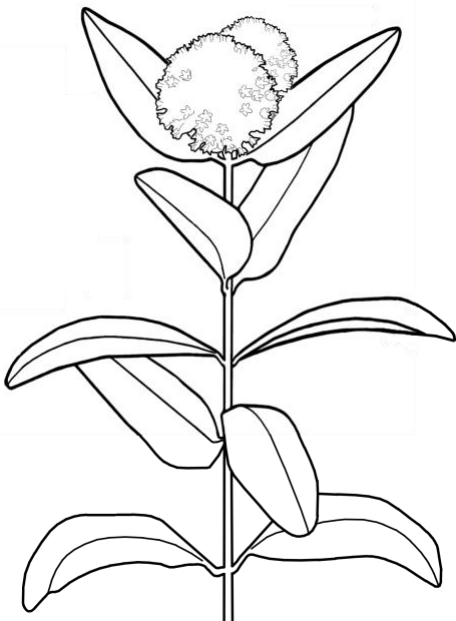
Name: Bluebird
Habitat: Grassland Edges
When to see them: Mostly Spring, Summer, Fall
What they eat: Insects, Berries, Seeds
Their home: Trees and bird boxes



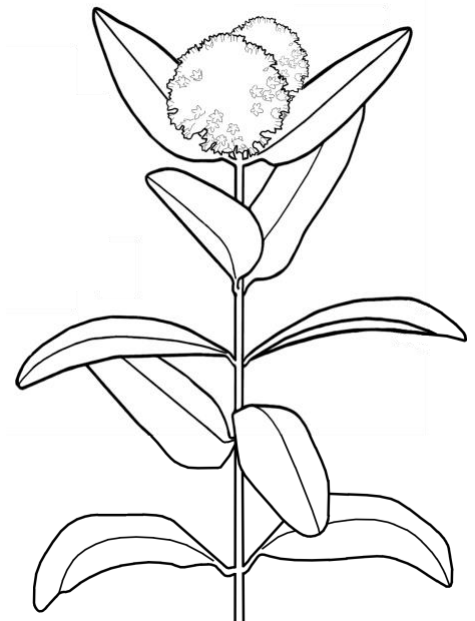
Name: Common Milkweed
Habitat: Grasslands
When to see them: Summer Flowers, Fall Seeds
What they eat: Sunshine, air, and water
Their home: Soil



Name: Common Milkweed
Habitat: Grasslands
When to see them: Summer Flowers, Fall Seeds
What they eat: Sunshine, air, and water
Their home: Soil



Name: Common Milkweed
Habitat: Grasslands
When to see them: Summer Flowers, Fall Seeds
What they eat: Sunshine, air, and water
Their home: Soil



Name: Common Milkweed
Habitat: Grasslands
When to see them: Summer Flowers, Fall Seeds
What they eat: Sunshine, air, and water
Their home: Soil



Name: Big Bluestem

Habitat: Grassland

When to see them: All year

What they eat: Sunshine, air, and water

Their home: Soil



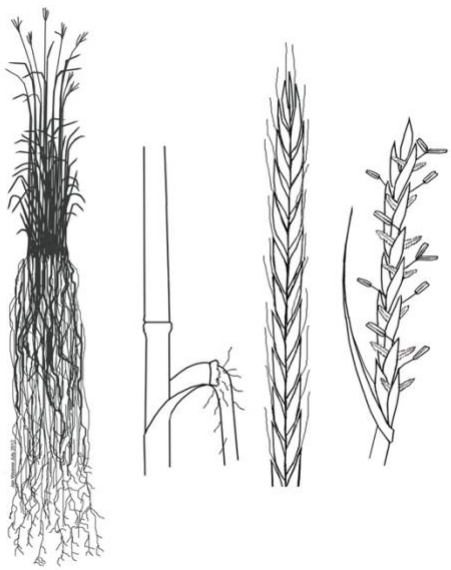
Name: Big Bluestem

Habitat: Grassland

When to see them: All year

What they eat: Sunshine, air, and water

Their home: Soil



Name: Big Bluestem

Habitat: Grassland

When to see them: All year

What they eat: Sunshine, air, and water

Their home: Soil



Name: Big Bluestem

Habitat: Grassland

When to see them: All year

What they eat: Sunshine, air, and water

Their home: Soil



Name: Monarch Butterfly
Habitat: Grassland
When to see them: Spring, Summer, Fall
What they eat: Milkweeds
Their home: Milkweed Plants



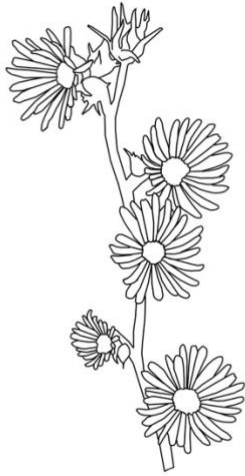
Name: Monarch Butterfly
Habitat: Grassland
When to see them: Spring, Summer, Fall
What they eat: Milkweeds
Their home: Milkweed Plants



Name: Monarch Butterfly
Habitat: Grassland
When to see them: Spring, Summer, Fall
What they eat: Milkweeds
Their home: Milkweed Plants



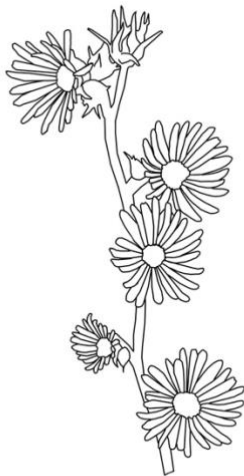
Name: Monarch Butterfly
Habitat: Grassland
When to see them: Spring, Summer, Fall
What they eat: Milkweeds
Their home: Milkweed Plants



Name: Compass Plant
Habitat: Grassland
When to see them: Flowers June to August
What they eat: Sunshine, air, and water
Their home: Soil



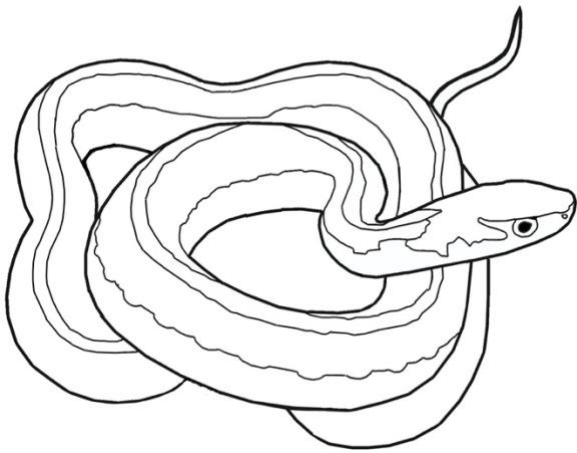
Name: Compass Plant
Habitat: Grassland
When to see them: Flowers June to August
What they eat: Sunshine, air, and water
Their home: Soil



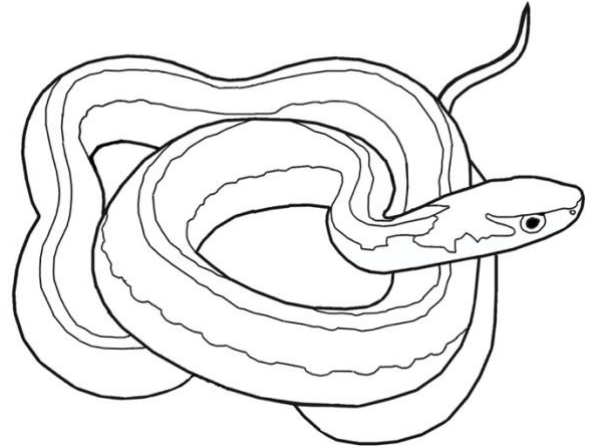
Name: Compass Plant
Habitat: Grassland
When to see them: Flowers June to August
What they eat: Sunshine, air, and water
Their home: Soil



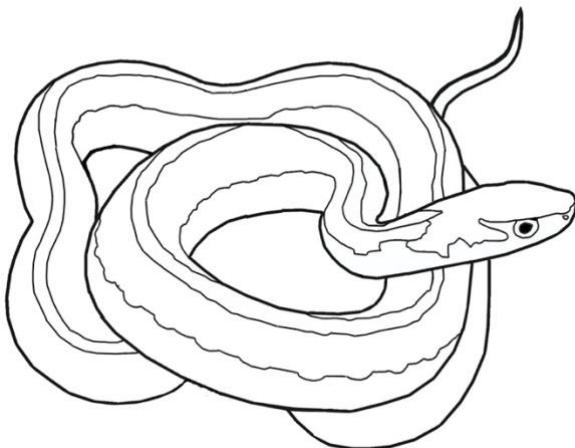
Name: Compass Plant
Habitat: Grassland
When to see them: Flowers June to August
What they eat: Sunshine, air, and water
Their home: Soil



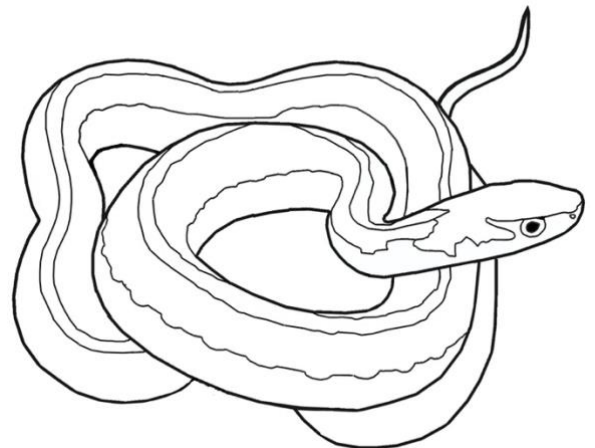
Name: Garter Snake
Habitat: Grassland
When to see them:
What they eat: Almost any animal smaller than them
Their home: Wet places



Name: Garter Snake
Habitat: Grassland
When to see them:
What they eat: Almost any animal smaller than them
Their home: Wet places



Name: Garter Snake
Habitat: Grassland
When to see them:
What they eat: Almost any animal smaller than them
Their home: Wet places



Name: Garter Snake
Habitat: Grassland
When to see them:
What they eat: Almost any animal smaller than them
Their home: Wet places

